

Contra Vision[®] BACKLITE Impress[™] Through Combination Method

Artwork for Contra Vision[®] BACKLITE Impress[™] Using Adobe[®] Illustrator[®]

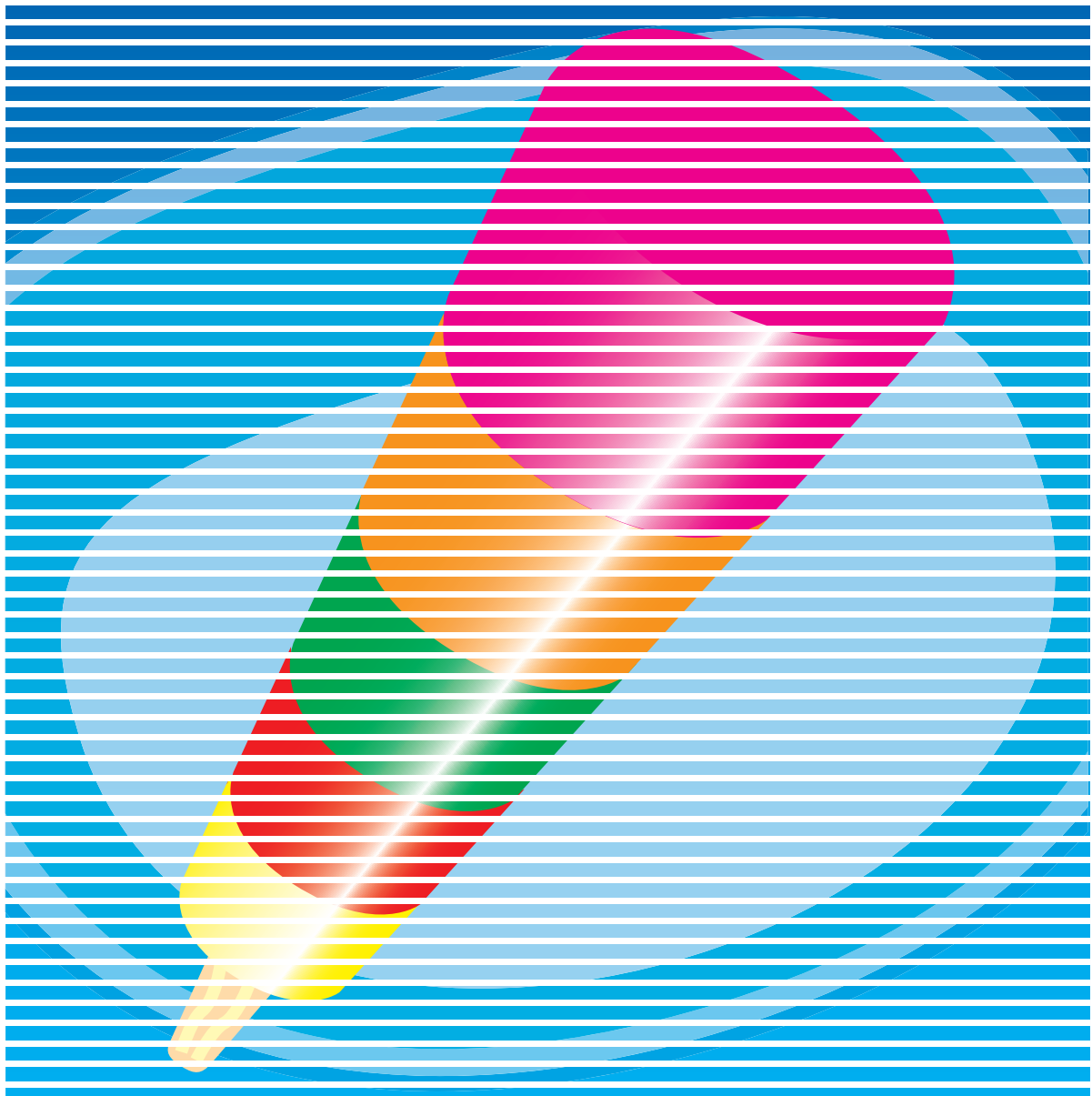


Image shows 2.1mm lines (design) with 0.9mm gaps (transparent on finished product)

Contra Vision® BACKLITE Impress™ Through Combination Method

Understanding Line Disciplines

Creating artwork for Contra Vision® BACKLITE Impress™ is a quick and simple process. This brief guide will introduce you to the concept of Contra Vision® BACKLITE Impress™, explain to you how to understand line disciplines and demonstrate how to generate these line disciplines using Adobe® Illustrator®.

Contra Vision® BACKLITE Impress™ is a very different type of see-through graphics to one-way vision panels such as Contra Vision® Impress™. A translucent design layer (CMYK or spot colours) is superimposed on a translucent white “base pattern”, for example a pattern of translucent white lines, on a transparent substrate, typically a self-adhesive film. Its main advantages are relative economy and the ability to illuminate the design from behind. A reverse image of the design is seen from the other side.

Understanding Line Disciplines

In the accompanying detailed “know-how”, you will find a number of different line disciplines to suit different products and product sizes. For the purposes of this guide, we will work with a line discipline of 2.1mm design layer lines at 3.0mm centres.

This guide describes the process for panels applied to the outside of a window. If you are applying the panel to the inside of a window the order of the print layers is reversed (eg, print the design layer first in reverse, then white).

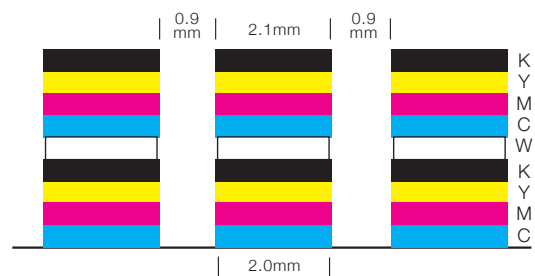
It has been found preferable to make the white base layer lines slightly less wide than the CMYK design layers - for example 2.0mm centres. So to produce a print using this line discipline you need to firstly print white lines at 2.0 mm wide (ww).

A mask of 0.9mm white lines is placed in front of the design so that the design is printed in 2.1 mm lines (wd) onto the white lines. All lines are repeated at 3mm (C) line centres.

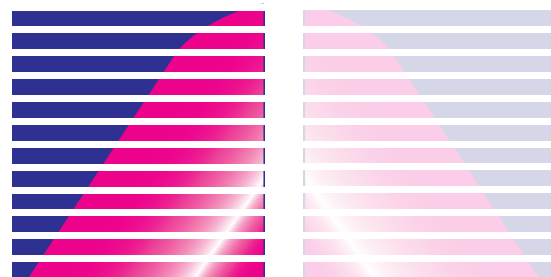
Cross section of lines showing the widths of the white layer slightly reduced relative to the CMYK design layer



For high quality architectural projects, it is advantageous to print two design layers with an intermediate white base pattern layer.



On the finished panel the front shows the CMYK design. On the reverse side we see a white base layer and also see a weaker version of the CMYK design as it is behind the translucent base layer.



Front

Reverse

Contra Vision® BACKLITE Impress™ Through Combination Method

Creating Line Patterns for Contra Vision® BACKLITE Impress™ Using Adobe® Illustrator®

The following instructions show you how to make line patterns for the layer of 2.0mm white lines @ 3.0mm centres. You will also make a mask pattern of 0.9mm white lines @ 3.0mm centres.

These 0.9mm lines will be placed on top of the design layer to mask off some of the design so that these areas will be transparent. What is left will be the 2.1mm design layer lines @ 3.0mm centres that are required.

As Adobe® Illustrator® is vector-based, line patterns can be realised with a high level of accuracy. Line patterns are easily editable and repeatable.

Step by step guide

Firstly set your document to the finished bleed size at 100% scale. In this example we will be working with an A4 portrait file with 5mm bleed so our document needs to be 220mm wide x 307mm high. Create three layers in the document called: 'White', 'Design' and 'Mask'

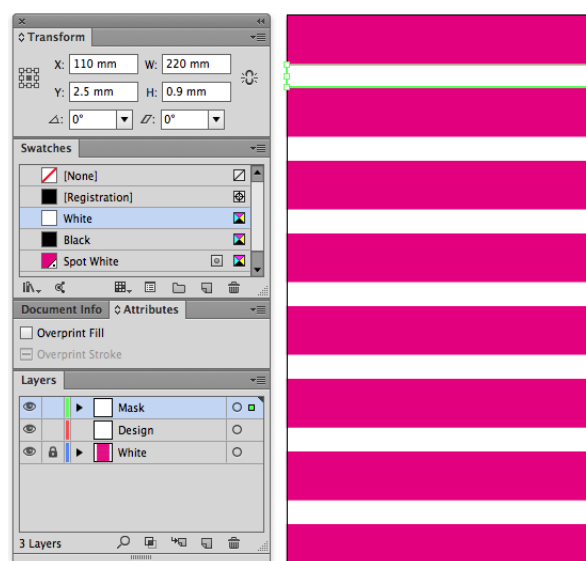
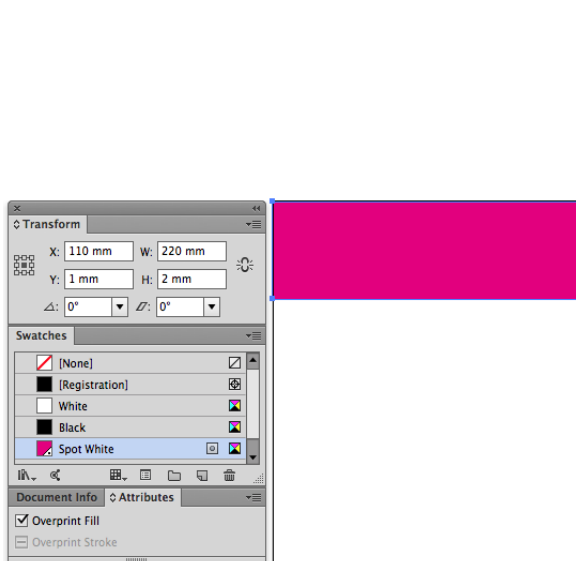
To draw the white line pattern ensure you are working in the 'White' layer, then select the rectangle tool and draw a rectangle 220mm wide by 2.0mm high. Fill this rectangle with a white spot colour (coloured magenta for illustration purposes in this example) then align this to the top left of the artboard.

Copy the rectangle to the pasteboard (Edit > Copy) and paste in front (Edit > Paste in Front) onto the 'Mask' layer. You will need to lock the 'White' layer. Ensure that the reference point is set to the centre in the Transform palette then change the height of this rectangle to 0.9mm. Colour this rectangle white. This rectangle needs to be moved down by 1.5mm (half of the 3.0mm centres), to ensure that the mask overlaps the gap between the back up lines equally.

Now you need to repeat this line pattern to fill the page. Unlock all layers, select all three rectangles and open Transform Effect (Effect > Distort & Transform > Transform).

Based on our A4 portrait artboard there are 102 duplicate copies that need to be made. If you are working on a larger scale document, ensure that the preview box is ticked. This will allow you to view the lines and increase or decrease this number as necessary.

Once you have repeated the lines using the Transform Effect you need to expand the effect to create the lines as vector objects. To do this select all then Object > Expand Appearance. All objects will have retained the layer information so you now have a complete artboard full of your line discipline arranged onto the correct layers.



Contra Vision[®] BACKLITE Impress[™] Through Combination Method

Creating Line Patterns for Contra Vision[®] BACKLITE Impress[™] Using Adobe[®] Illustrator[®]

Importing your artwork and outputting to your RIP

Once you have completed your line pattern you can place your artwork into the 'Design' layer. Align your artwork to the centre of the artboard and you can be sure that all of the elements of the line discipline will be aligned when printed.

You can now turn off the layers as required to suit your output process. For example: turn off the 'Design' and 'Mask' layers to output the white line pattern or turn off the 'White' layer to output your design layer with the mask in place.

Please note that within the nominated RIP software the spot white layer needs to be printed white - magenta is used for visual purposes only.